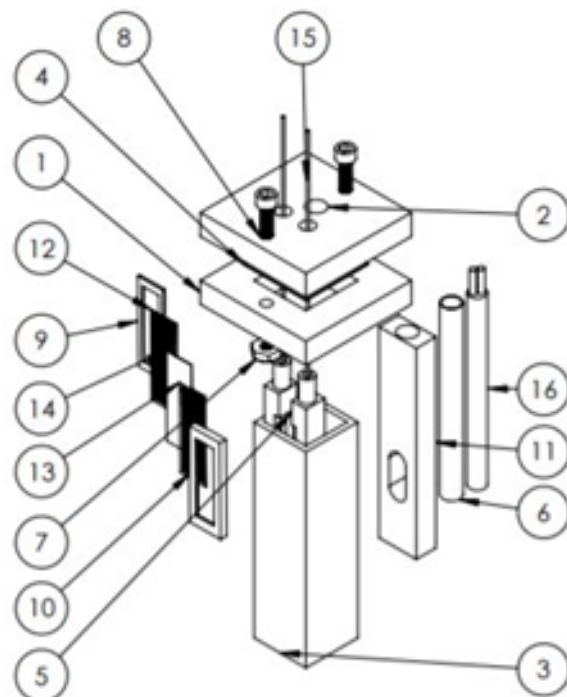


2

ITEM NO.	PART NUMBER	PART SOURCE
1	Cuvette Collar	3D printed
2	Cuvette Lid	Machined as per part drawing. mcmaster.com/9083K35
3	Cuvette Body	Amazon Part No. B00914AE5W
4	Silicone Gasket	Cut from mcmaster.com/6459N121
5	Leg Inserts (X2)	3D printed
6	Steel Tube	mcmaster.com/50415K61
7	Nuts (X2)	mcmaster.com/90480A003
8	Screws	mcmaster.com/92196A074
9	Frame1 (0.3off)	3D printed
10	Frame2 (0.5off)	3D printed
11	Conducting Sleeve	Machined as per part drawing. mcmaster.com/9083K35
12	Current Collector 1	Cut to desired shape using appropriate wire mesh
13	Current Collector 2	Cut to desired shape using appropriate wire mesh
14	PVDF	Cut to desired shape
15	Wire Probe	mcmaster.com/92705K12 Insulate using heat-shrink wrap
16	50W Heater	walmart.com/ip/TEMPCO-HDC19102- Swaged-Cartridge-Heater-180W-sq- In/44005079

B

1



B

A

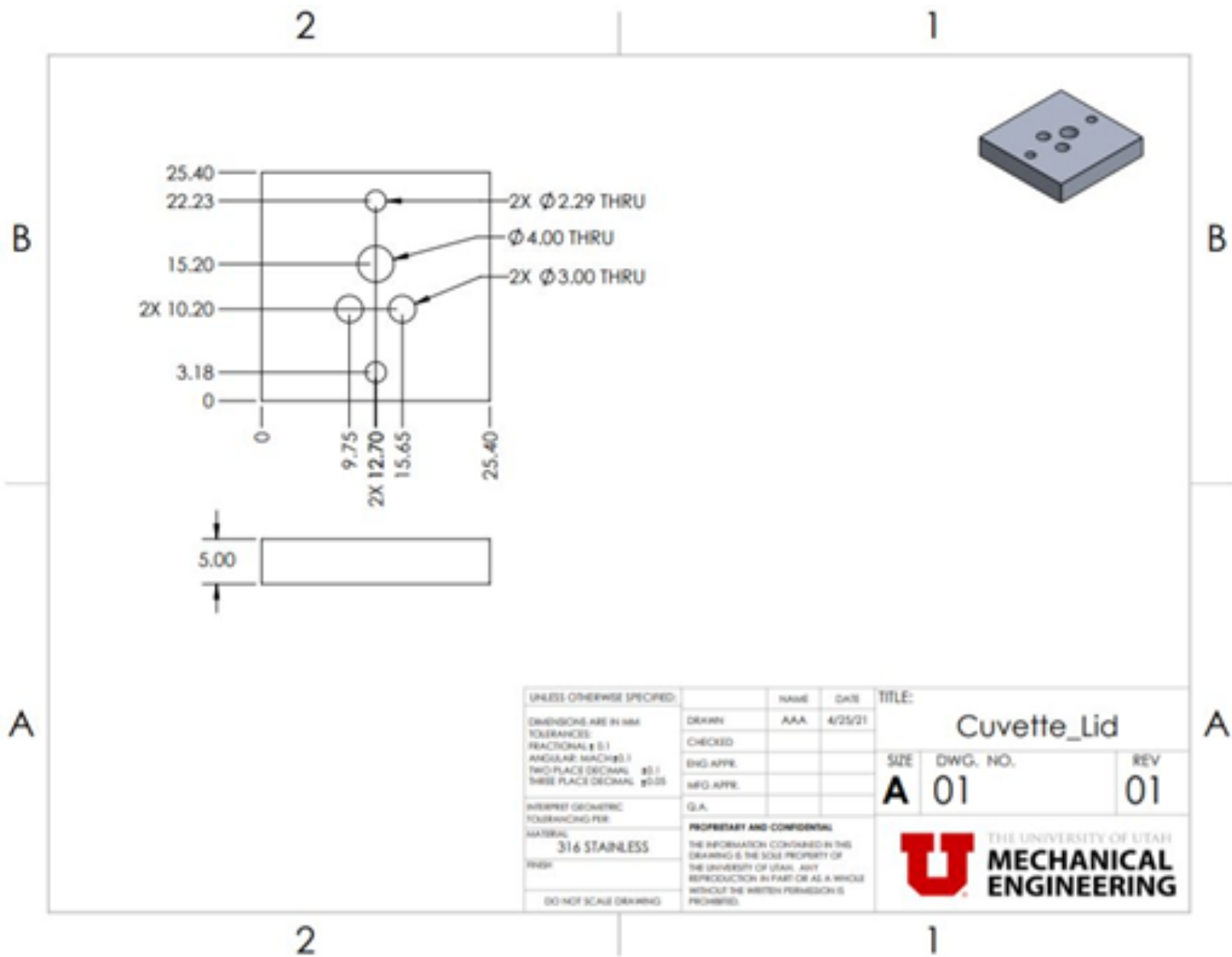
Parts Used But Not Shown Above	
Thermocouple (Type K Teflon-Coated)	jkem.com/product/thin-wire- thermocouple/
Outlet Timer	Amazon Part No. B01G6O28NA
AC Power Cord	Amazon Part No. B07SMXCT7D
Adhesive Puffy (To seal wires & TC)	mcmaster.com/7576A2
JB Weld Extreme Heat (To secure heater parts)	Amazon Part No. B01IBOBY74

2

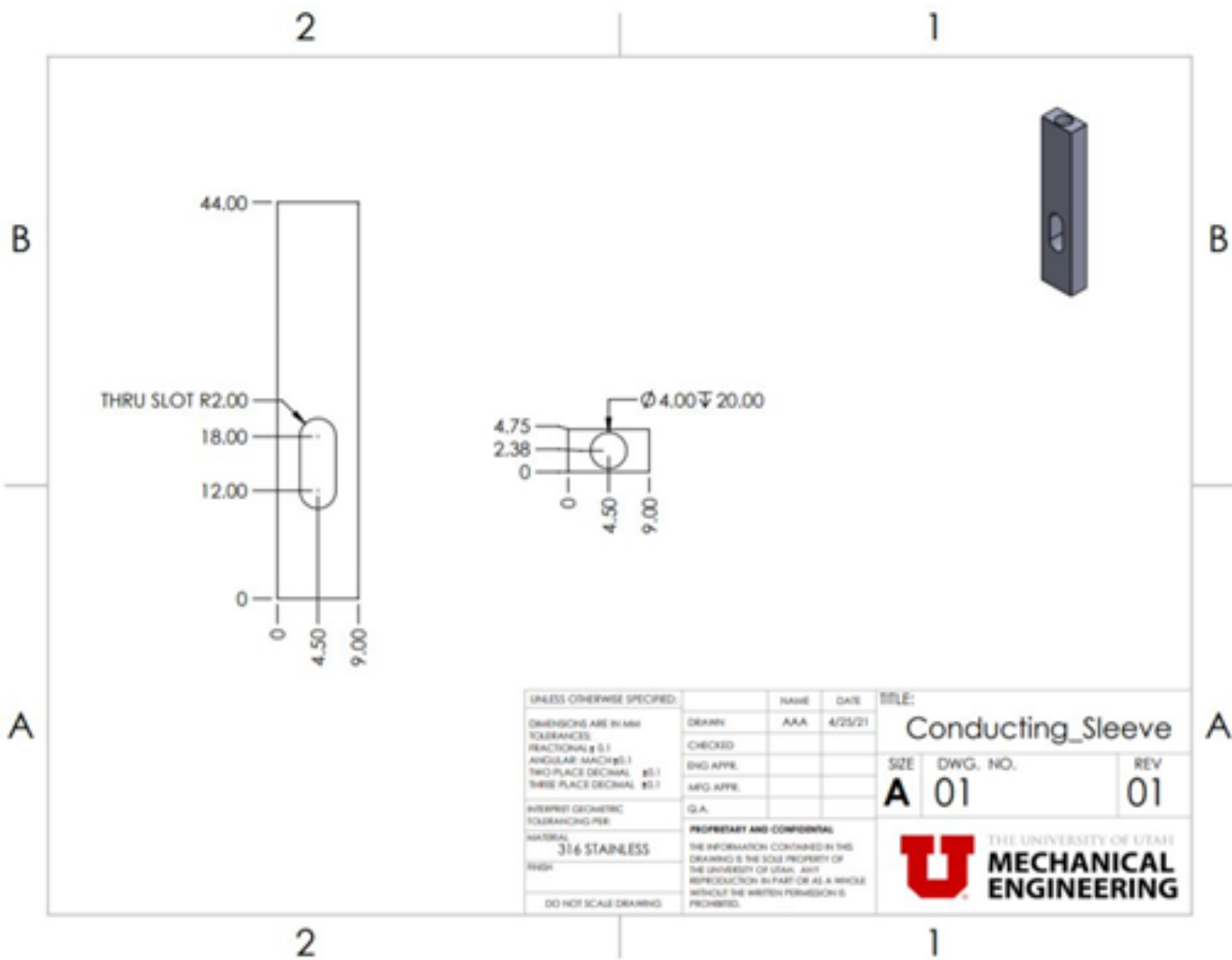
	NAME	DATE	TITLE:		
DRAWN	AAA	4/25/21	Cuvette Cell		
CHECKED			SIZE	DWG. NO.	REV
END APPR.			A	01	01
MFG APPR.					
G.A.					
PROPRIETARY AND CONFIDENTIAL THE INFORMATION CONTAINED IN THIS DRAWING IS THE SOLE PROPERTY OF THE UNIVERSITY OF UTAH. ANY REPRODUCTION IN PART OR AS A WHOLE WITHOUT THE WRITTEN PERMISSION IS PROHIBITED.					

A

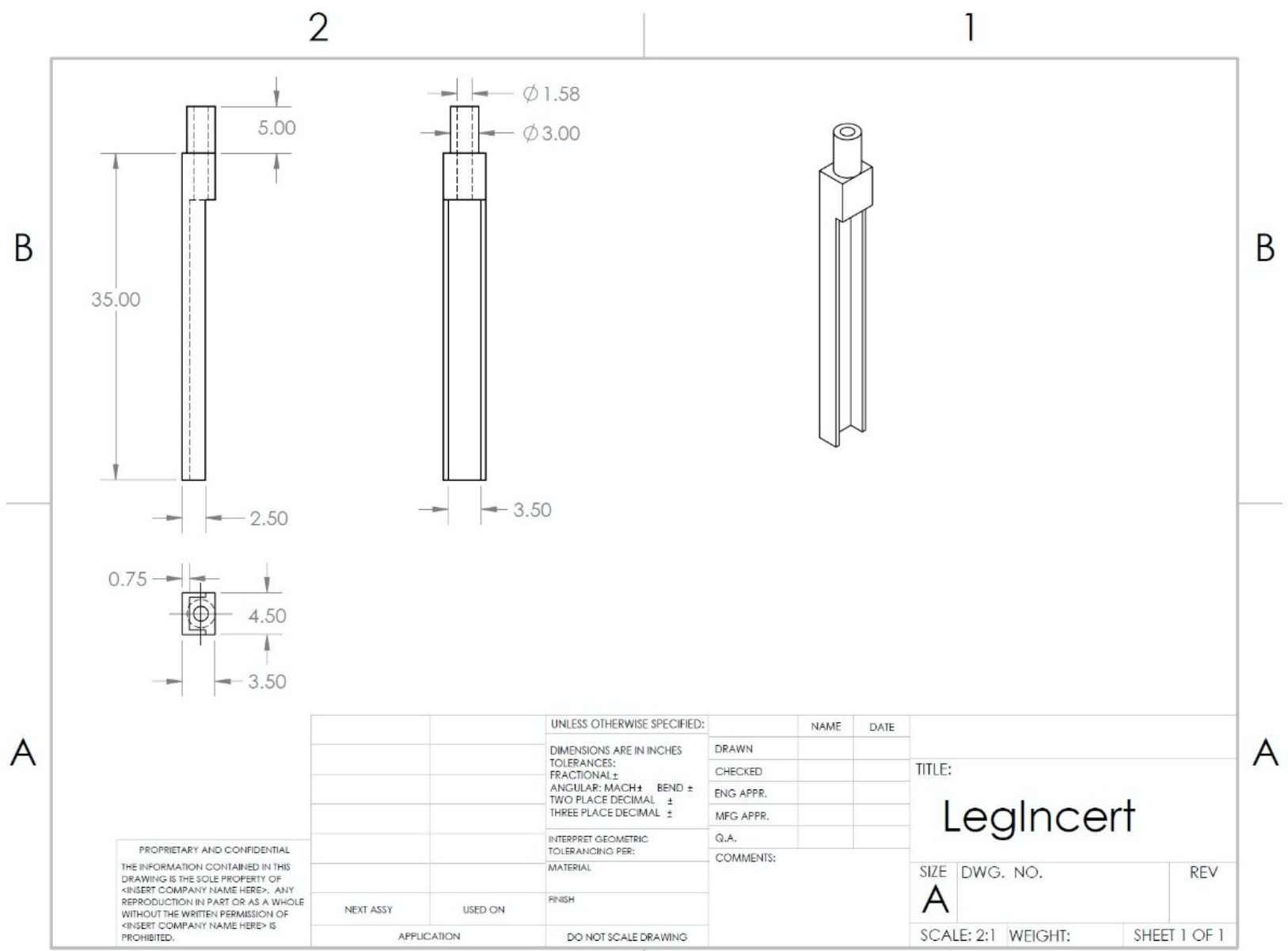
1



UNLESS OTHERWISE SPECIFIED:		NAME	DATE	TITLE:	
DIMENSIONS ARE IN MM		DRWEN	AAA	Cuvette_Lid	
TOLERANCES:		CHECKED		SIZE	DWG. NO.
FRACTIONAL ± 0.1		ENG APPR.		A	01
ANGULAR MACH ± 0.1		INFO APPR.			REV
TWO PLACE DECIMAL ± 0.1		G.A.			01
THREE PLACE DECIMAL ± 0.05		PROPRIETARY AND CONFIDENTIAL		THE UNIVERSITY OF UTAH	
INTERPRET GEOMETRIC TOLERANCING PER:		THE INFORMATION CONTAINED IN THIS DRAWING IS THE SOLE PROPERTY OF THE UNIVERSITY OF UTAH. ANY REPRODUCTION IN PART OR AS A WHOLE WITHOUT THE WRITTEN PERMISSION IS PROHIBITED.		MECHANICAL ENGINEERING	
MATERIAL:		316 STAINLESS			
FINISH:					
DO NOT SCALE DRAWING					

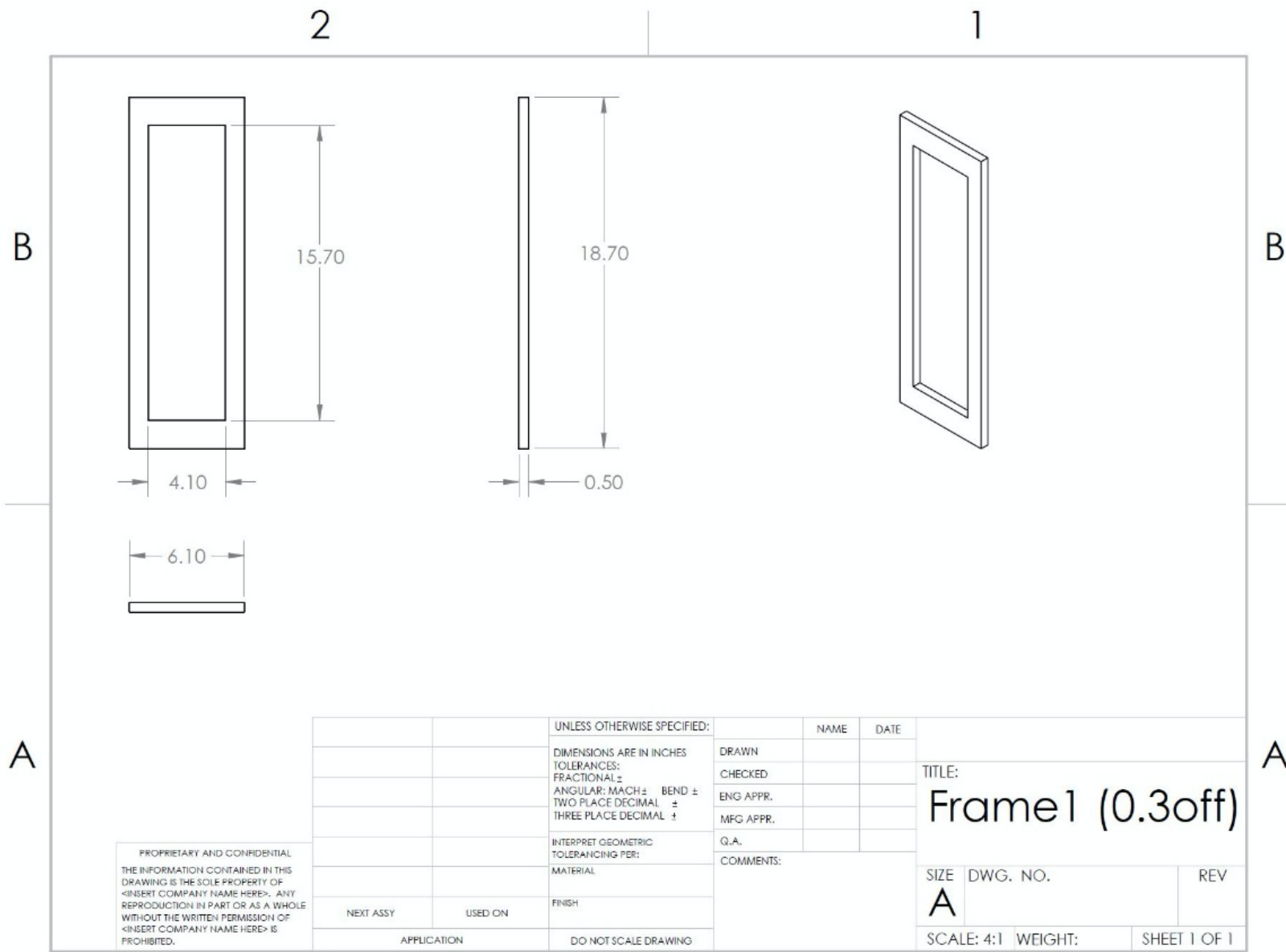


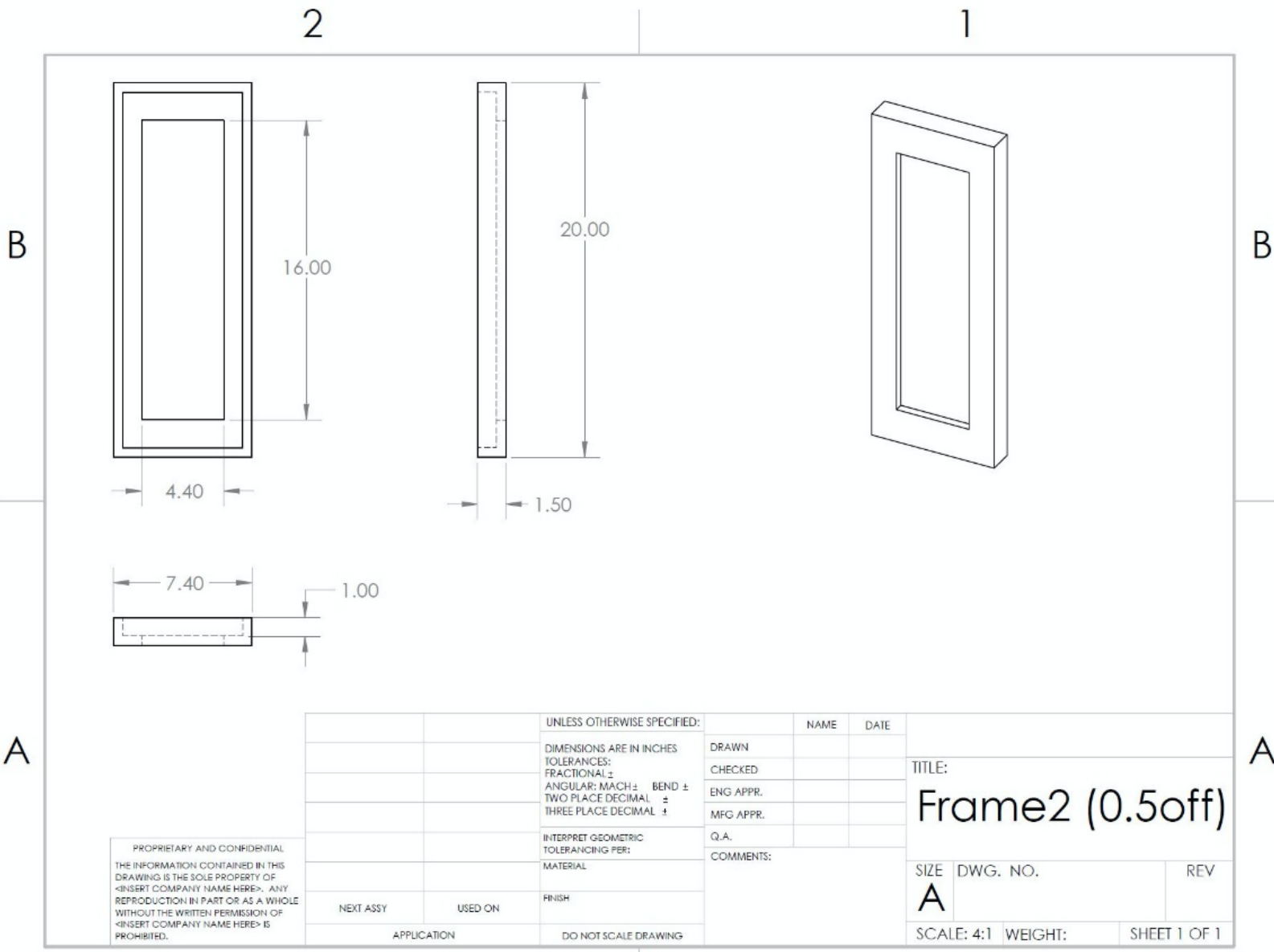
UNLESS OTHERWISE SPECIFIED:	NAME	DATE	TITLE:
DIMENSIONS ARE IN MM	AAA	4/25/21	Conducting_Sleeve
TOLERANCES:	CHECKED		SIZE DWG. NO. REV
FRAC TIONS ± 0.1	ENG APPR.		A 01 01
ANGULAR MATCHES ± 0.1	MFG APPR.		
TWO PLACE DECIMAL ± 0.1	Q.A.		
THREE PLACE DECIMAL ± 0.1			
EVERY GEOMETRIC TOLERANCING PER	PROPRIETARY AND CONFIDENTIAL		
MATERIAL	THE INFORMATION CONTAINED IN THIS DRAWING IS THE SOLE PROPERTY OF THE UNIVERSITY OF UTAH. ANY REPRODUCTION IN PART OR AS A WHOLE WITHOUT THE WRITTEN PERMISSION IS PROHIBITED.		
316 STAINLESS			
FINISH			
DO NOT SCALE DRAWING			



PROPRIETARY AND CONFIDENTIAL
 THE INFORMATION CONTAINED IN THIS
 DRAWING IS THE SOLE PROPERTY OF
 <INSERT COMPANY NAME HERE>. ANY
 REPRODUCTION IN PART OR AS A WHOLE
 WITHOUT THE WRITTEN PERMISSION OF
 <INSERT COMPANY NAME HERE> IS
 PROHIBITED.

		UNLESS OTHERWISE SPECIFIED:	NAME	DATE		
		DIMENSIONS ARE IN INCHES	DRAWN		TITLE:	
		TOLERANCES:	CHECKED		LegIncert	
		FRACTIONAL ±	ENG APPR.			
		ANGULAR: MACH ± BEND ±	MFG APPR.			
		TWO PLACE DECIMAL ±	Q.A.		SIZE	DWG. NO.
		THREE PLACE DECIMAL ±	COMMENTS:		A	REV
NEXT ASSY	USED ON	FINISH			SCALE: 2:1	WEIGHT:
APPLICATION		DO NOT SCALE DRAWING			SHEET 1 OF 1	





PROPRIETARY AND CONFIDENTIAL
 THE INFORMATION CONTAINED IN THIS
 DRAWING IS THE SOLE PROPERTY OF
 <INSERT COMPANY NAME HERE>. ANY
 REPRODUCTION IN PART OR AS A WHOLE
 WITHOUT THE WRITTEN PERMISSION OF
 <INSERT COMPANY NAME HERE> IS
 PROHIBITED.

		UNLESS OTHERWISE SPECIFIED:		NAME	DATE
		DIMENSIONS ARE IN INCHES	DRAWN		
		TOLERANCES:	CHECKED		
		FRACTIONAL ±	ENG APPR.		
		ANGULAR: MACH ± BEND ±	MFG APPR.		
		TWO PLACE DECIMAL ±	Q.A.		
		THREE PLACE DECIMAL ±	COMMENTS:		
		INTERPRET GEOMETRIC TOLERANCING PER:			
		MATERIAL			
		FINISH			
NEXT ASSY	USED ON				
APPLICATION		DO NOT SCALE DRAWING			

TITLE: Frame2 (0.5off)		
SIZE A	DWG. NO.	REV
SCALE: 4:1	WEIGHT:	SHEET 1 OF 1