

ITEM NO.	PART NUMBER	DESCRIPTION	QTY.
1	90585A021	2-56 x 3/32 Nylon Screw	4
2	PTE lid	Viewing Window	1
3	Conductor Sheet	Conductor Sheet	1
4	PTFE Insulator	PTFE Insulator	1
5	9262K164	15.5mmx1mm O-ring	1
6	Anode	Top collector	1
7	PVDF	Cell Separator	1
8	Anode	Bottom Collector	1
9	Disk Base	316 Stainless Disk Cell Base	1
10	926-1314-ND	TEC Heater	2



Note A: PTE Lid (2) and Conductor sheet (3) are adhered at their interface with epoxy

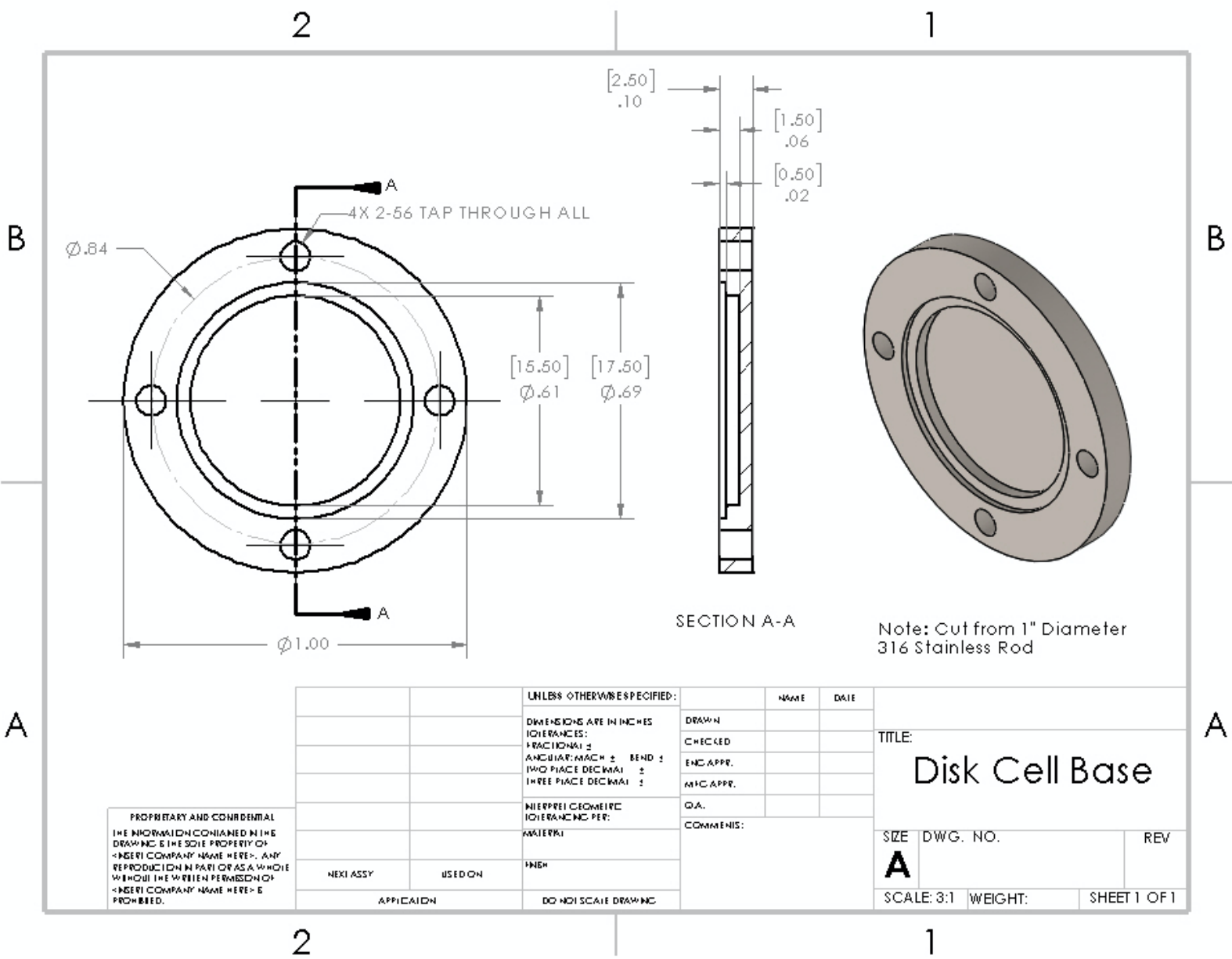
PROPRIETARY AND CONFIDENTIAL
 THE INFORMATION CONTAINED IN THIS DRAWING IS THE SOLE PROPERTY OF
 [INSERT COMPANY NAME HERE]. ANY
 REPRODUCTION IN PART OR AS A WHOLE
 WITHOUT THE WRITTEN PERMISSION OF
 [INSERT COMPANY NAME HERE] IS
 PROHIBITED.

UNLESS OTHERWISE SPECIFIED:		NAME	DATE
DIMENSIONS ARE IN INCHES		DRAWN	
TOLERANCES:		CHECKED	
FRACTIONAL ±		ENG APPR.	
ANGULAR: MACH ± BEND ±		MIC APPR.	
TWO PLACE DECIMAL ±		Q.A.	
THREE PLACE DECIMAL ±		COMMENTS:	
MATERIAL:			
FINISH:			
DD NOT SCALE DRAWING			

TITLE:
Disk Cell Assembly

SIZE DWG. NO. REV
A N/A

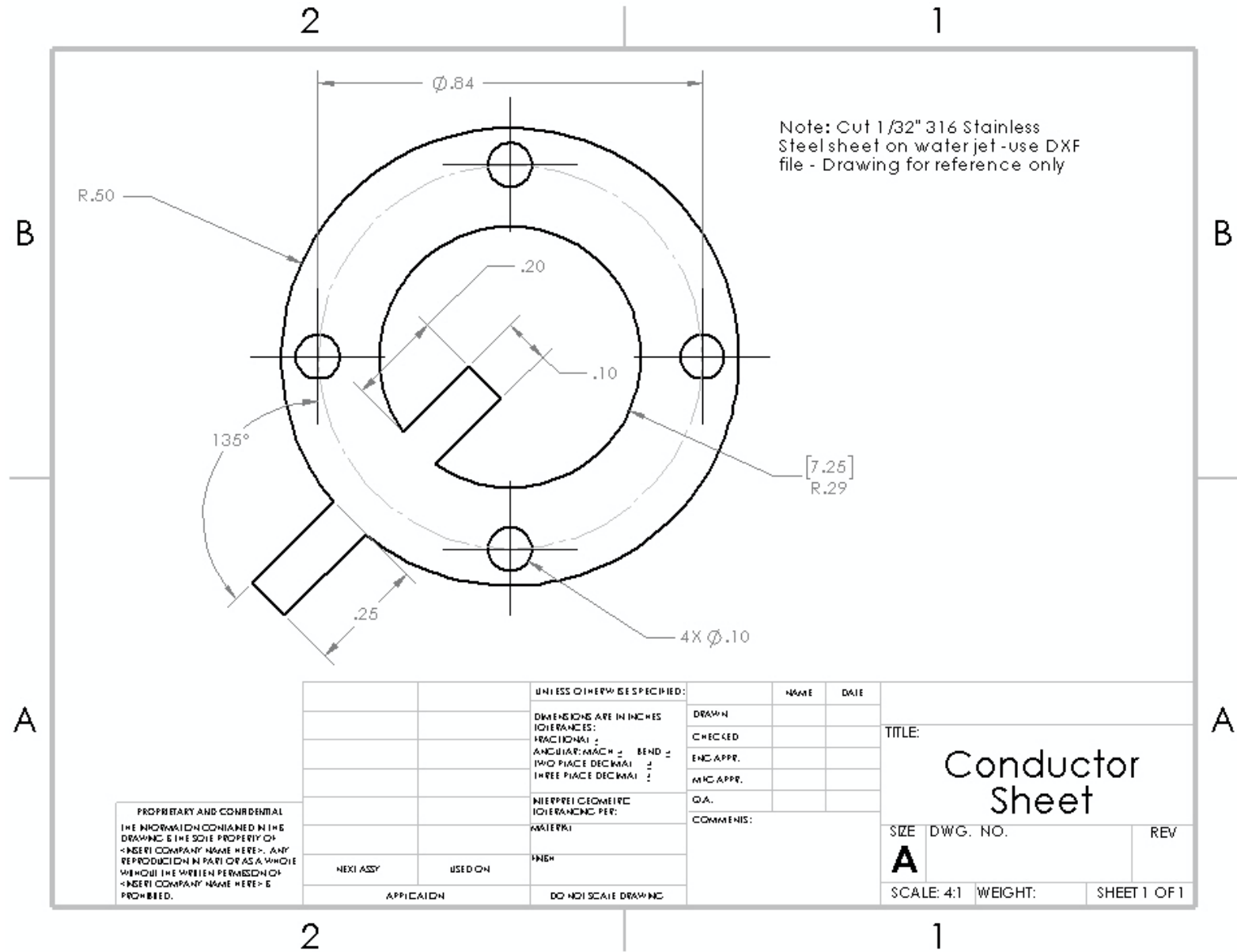
SCALE: 4:3 WEIGHT: SHEET 1 OF 1



PROPRIETARY AND CONFIDENTIAL
 THE INFORMATION CONTAINED IN THIS
 DRAWING IS THE SOLE PROPERTY OF
 [FACILITY COMPANY NAME HERE]. ANY
 REPRODUCTION IN PART OR AS A WHOLE
 WITHOUT THE WRITTEN PERMISSION OF
 [FACILITY COMPANY NAME HERE] IS
 PROHIBITED.

		UNLESS OTHERWISE SPECIFIED:		NAME	DATE
		DIMENSIONS ARE IN INCHES	DRAWN		
		TOLERANCES:	CHECKED		
		FRACTIONAL \pm	ENG APPR.		
		ANGULAR: MACH \pm BEND \pm	MFG APPR.		
		TWO PLACE DECIMAL \pm	QA.		
		THREE PLACE DECIMAL \pm	COMMENTS:		
		NEEPPRE GEOMETRIC TOLERANCING PER: ASME Y14.5			
		FINISH			
NEXT ASSY	USED ON				
APPLICATION		DO NOT SCALE DRAWING			

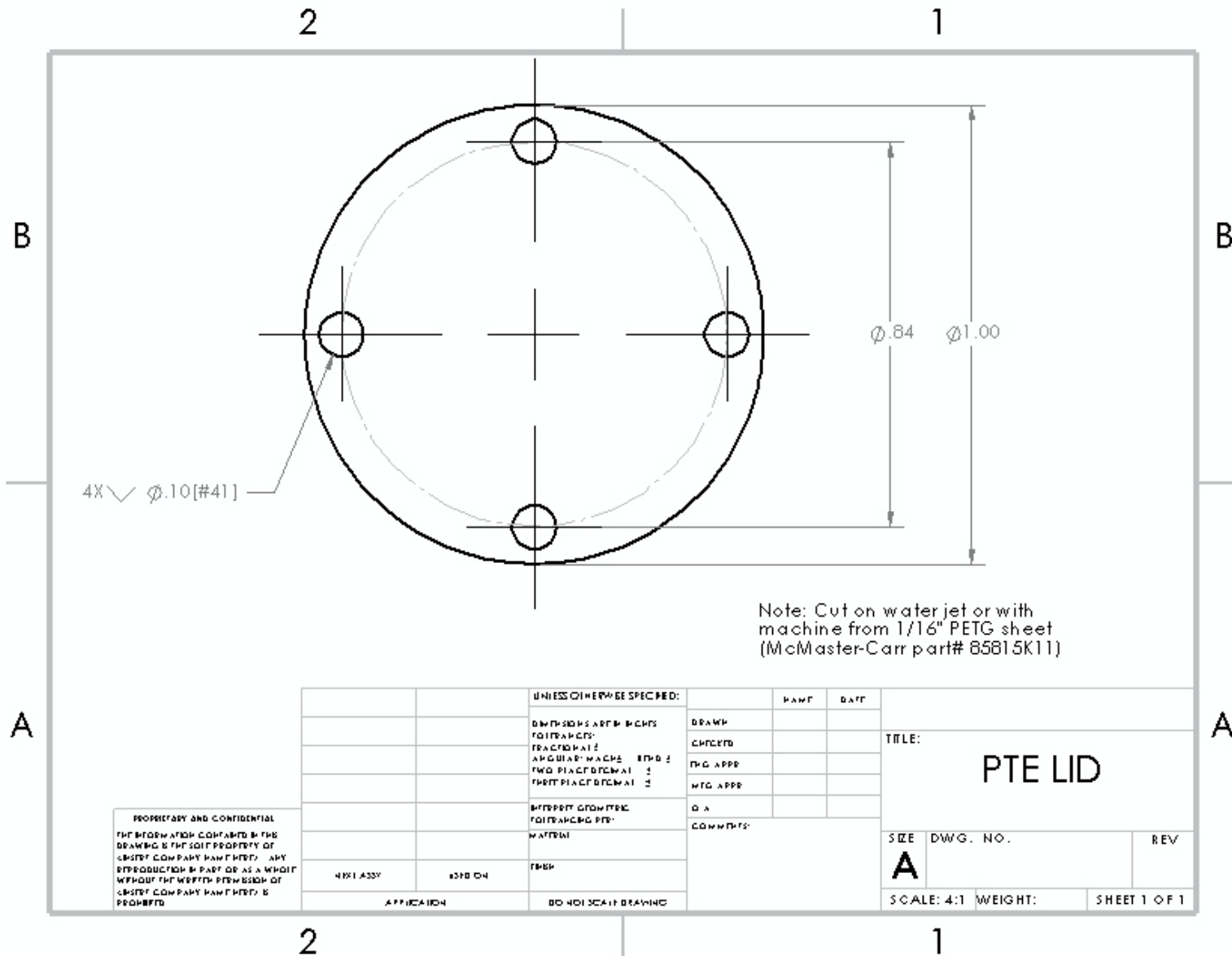
TITLE: Disk Cell Base		
SIZE A	DWG. NO.	REV
SCALE: 3:1	WEIGHT:	SHEET 1 OF 1



PROPRIETARY AND CONFIDENTIAL
 THE INFORMATION CONTAINED IN THIS DRAWING IS THE SOLE PROPERTY OF [INSERT COMPANY NAME HERE]. ANY REPRODUCTION IN PART OR AS A WHOLE WITHOUT THE WRITTEN PERMISSION OF [INSERT COMPANY NAME HERE] IS PROHIBITED.

		UNLESS OTHERWISE SPECIFIED:	NAME	DATE
		DIMENSIONS ARE IN INCHES	DRAWN	
		TOLERANCES:	CHECKED	
		FRACTIONAL: \pm	ENG APPR.	
		ANGULAR: MACH \pm BEND \pm	MFG APPR.	
		TWO PLACE DECIMAL \pm	QA:	
		THREE PLACE DECIMAL \pm	COMMENTS:	
		INTERPRET GEOMETRIC TOLERANCING PER: MATERIAL:		
		FINISH:		
NEXT ASSY	USED ON			
APPLICATION		DO NOT SCALE DRAWING		

TITLE: Conductor Sheet		
SIZE A	DWG. NO.	REV
SCALE: 4:1	WEIGHT:	SHEET 1 OF 1

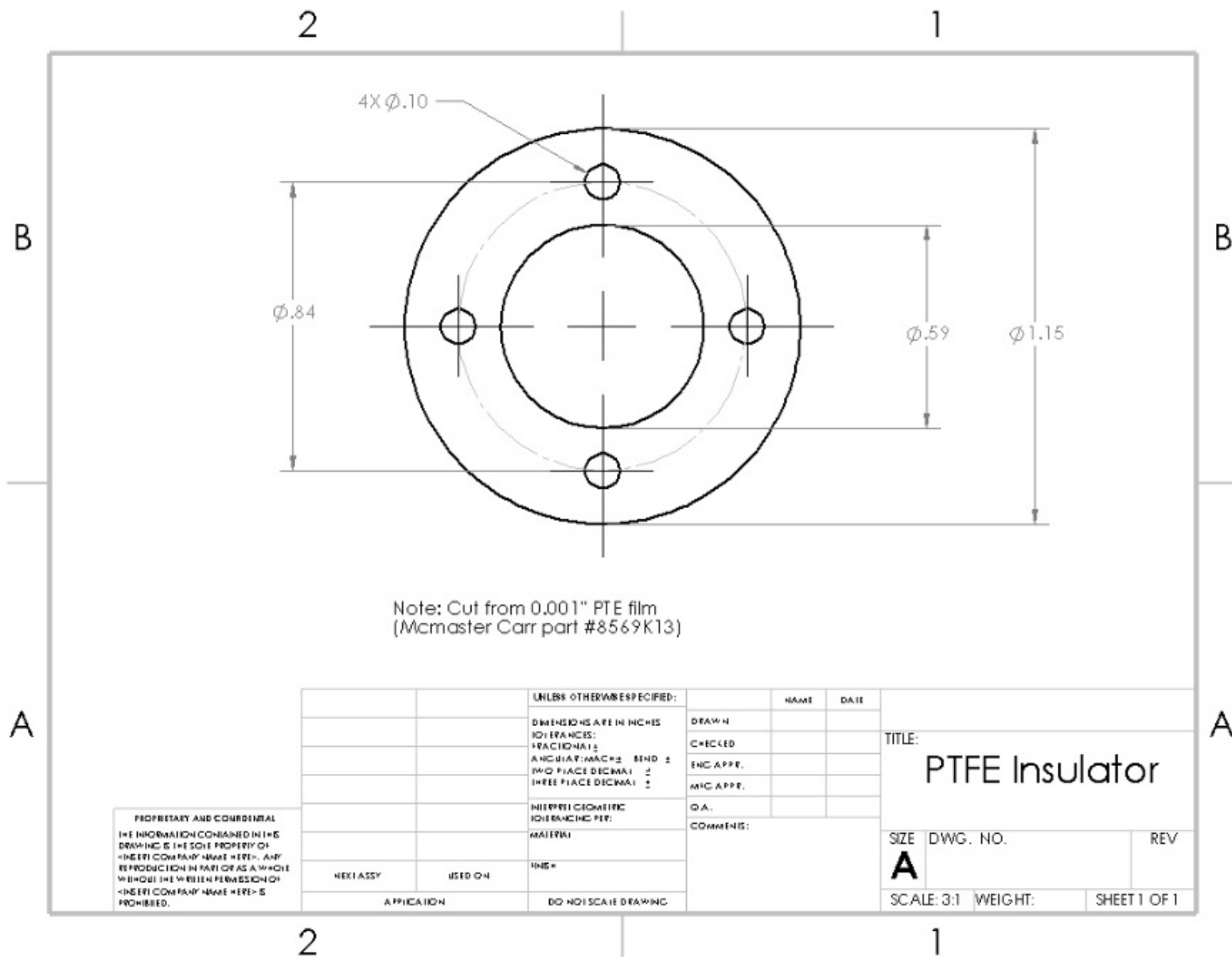


Note: Cut on water jet or with machine from 1/16" PETG sheet (McMaster-Carr part# 85815K11)

PROPRIETARY AND CONFIDENTIAL
 THE INFORMATION CONTAINED IN THIS DRAWING IS THE SOLE PROPERTY OF CHESTY COMPANY. ANY REPRODUCTION IN PART OR AS A WHOLE WITHOUT THE WRITTEN PERMISSION OF CHESTY COMPANY IS PROHIBITED.

UNLESS OTHERWISE SPECIFIED:		NAME	DATE
DIMENSIONS ARE IN INCHES		DRAWN	
TOLERANCES:		CHECKED	
FRACTIONS ±		ENG APPR	
ANGULAR: MAX ±	0.01	MFG APPR	
PLACEMENT ±		Q.A.	
THIRD PLACEMENT ±		COMMENTS:	
MATERIAL: PTFE			
FINISH:			
APPLICATION:	DO NOT SCALE DRAWING		

TITLE:		
PTE LID		
SIZE	DWG. NO.	REV
A		
SCALE: 4:1	WEIGHT:	SHEET 1 OF 1



PROPRIETARY AND CONFIDENTIAL
THE INFORMATION CONTAINED IN THIS
DRAWING IS THE SOLE PROPERTY OF
<INTELL COMPANY NAME HERE>, AND
REPRODUCTION IN WHOLE OR AS A PART
WITHOUT THE WRITTEN PERMISSION OF
<INTELL COMPANY NAME HERE> IS
PROHIBITED.

		UNLESS OTHERWISE SPECIFIED:	NAME	DATE
		DIMENSIONS ARE IN INCHES	DRAWN	
		FRACTIONS:	CHECKED	
		ANGULAR: DECIMALS	ENG APPR.	
		TWO PLACE DECIMALS	MFG APPR.	
		THREE PLACE DECIMALS		
		ISOMETRIC DIMENSIONS PER:	D.A.	
		MATERIAL	COMMENTS:	
HEAT SENSITIVE	USED ON	FINISH		
APPLICATION		DO NOT SCALE DRAWING		

TITLE: PTFE Insulator		
SIZE	DWG. NO.	REV
A		
SCALE: 3:1	WEIGHT:	SHEET 1 OF 1